



PCC PLAYBOOK

Our mission is to reach people who have been untouched or unaffected by traditional churches and guide them to become fully devoted followers of Jesus Christ.

1. **Why do we exist?** We exist to connect unchurched people to God and to one another.
2. **How do we behave?** Our answer defines our **CORE VALUES**. We are:
 - **FOCUSED** on one mission
 - **AUTHENTIC** in all relationships
 - **ACCEPTING** of all people
 - **EXCELLENT** in every effort
 - **GENEROUS** with our lives
3. **What do we do?** We move people into worship experiences, small groups, service, and missions.
4. **How will we succeed?** We will succeed by
 - 1) reaching people through exciting, relevant large group experiences,
 - 2) guiding people into opportunities to connect with one another for relational support and spiritual formation (small groups, service, care), and
 - 3) reproducing the PCC experience to transform unchurched populations in communities where there is no presence like ours.
5. **What is most important right now?** Over the next six months we will tackle multiple initiatives centered on one primary goal--connection. We will establish clear, defined, and efficient processes for people to connect with God and others. The first initiative is establishing clarity and efficiency with our staff processes and responsibilities.
6. **Who will do what?** See attached PCC Campus Dimension and Core Dimension charts.

How do we behave? (further defined)

Our CORE values define who we are; they are cultural markers so pervasive in our DNA that they quickly establish whether or not PCC is a good fit for an individual.

-----**FOCUSED** on one mission-----

We are willing to say 'no' to many things in order to say 'yes' to the things that keep a laser-like, unified focus on our mission. This includes being:

- Spiritually Healthy – modeling for one another and our community our foundational pursuit of corporate worship, personal Bible study, prayer, serving, authentic relationships and giving.
- Unified – setting aside personal preferences to wholeheartedly support the final decision of the team.
- Accessible – removing physical, emotional, spiritual and personal barriers to the church and God.

-----**AUTHENTIC** in all relationships-----

We are willing to be genuine, transparent, open and honest in our relationships with God and with one another. This includes being:

- Honest – relating to God and one another with truth-telling, trust, and no withholds (last 10%).
- Honorable – acting with integrity and moral courage, controlling impulses and appetites to do what is right, even if the cost is high; ultimately bringing honor to God and the church.

-----**ACCEPTING** of all people-----

We are accepting of all people who are investigating the claims of Christ, regardless of their spiritual, emotional, physical or relational condition.

-----**EXCELLENT** in every effort-----

We are excellent in every effort, believing that bringing our best honors God and inspires people. This includes being:

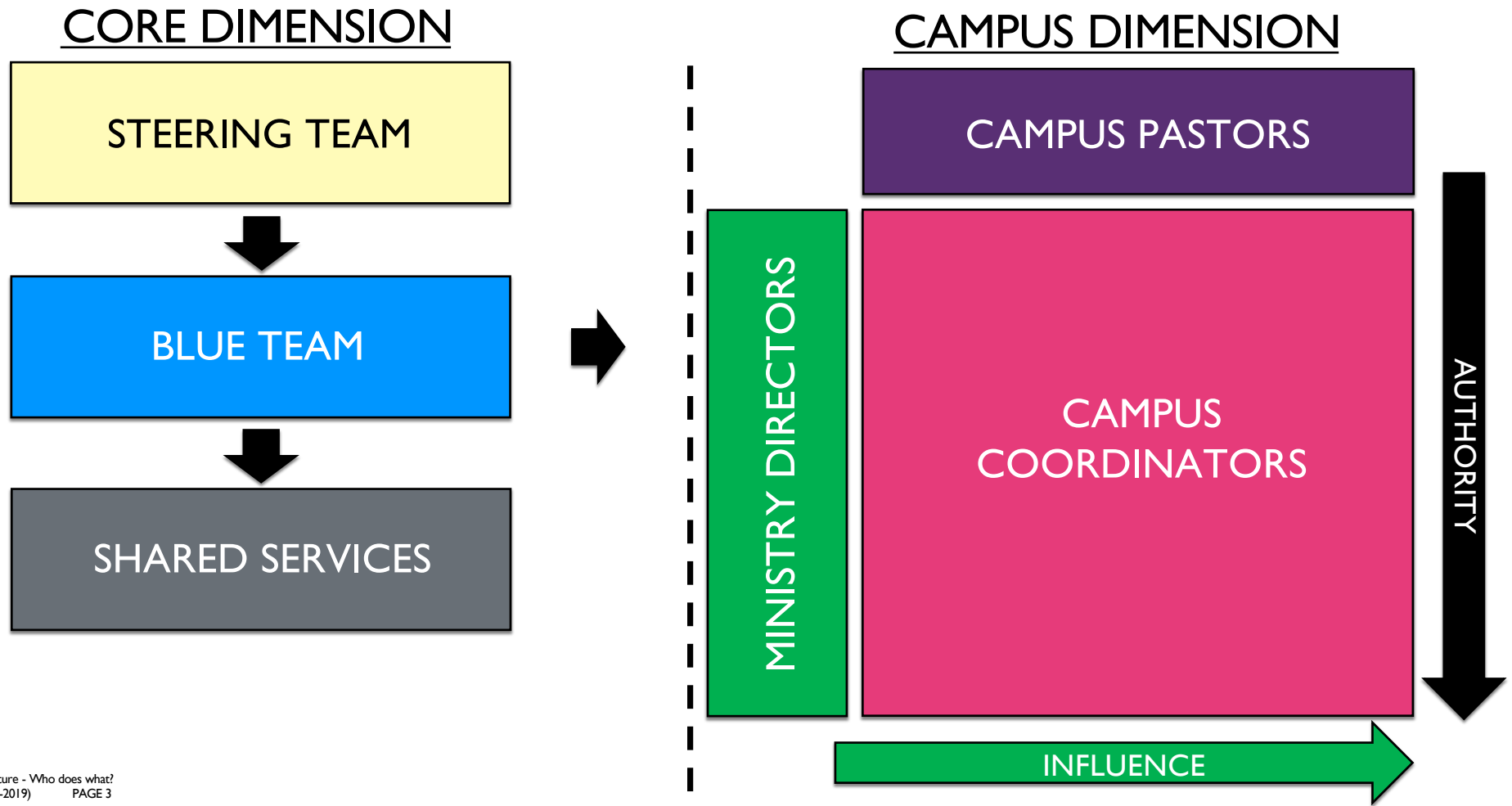
- Creative – willing to innovate, see possibility, and try new things in everything that we do.
- Relevant – committed to helping people see how following Christ can change their lives for the better.

-----**GENEROUS** with our lives-----

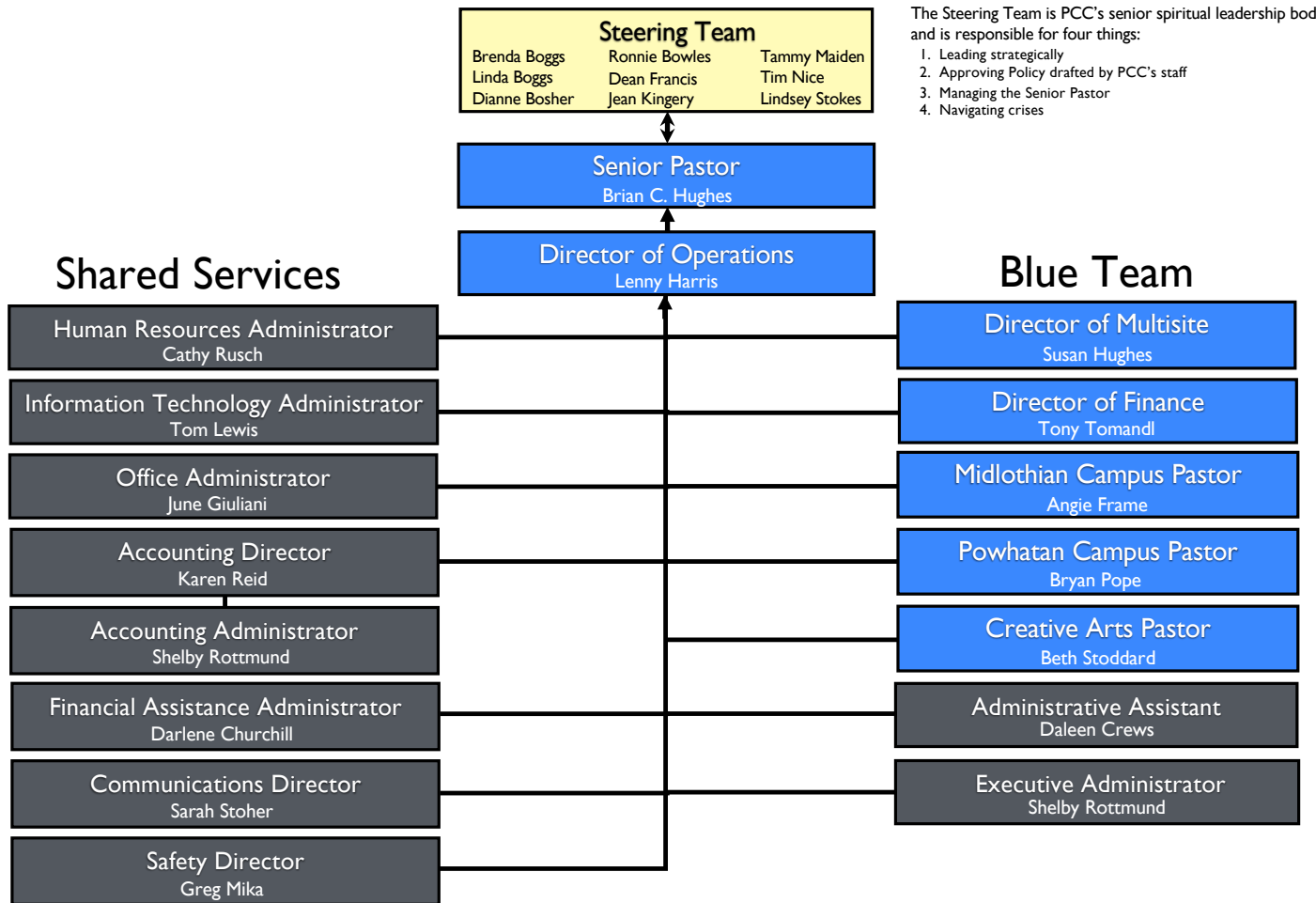
We are generous, because God has graciously given us what we need and even more than we deserve--life, talents, relationships, experiences, skills, and money. We graciously offer all of that to God, his church, and his people. This includes being:

- Committed - regularly volunteering within PCC and regularly giving financially to the budget.
- Sacrificial - following Jesus' example of sacrifice and occasionally giving of time and/or money in a way that stretches us.
- Helpful - meeting tangible needs in our communities, country, and world.
- Available - being open to invitations from God to give of ourselves for the good of others.

PASSION COMMUNITY CHURCH MULTISITE STRUCTURE



Core Dimension



The Steering Team is PCC's senior spiritual leadership body and is responsible for four things:

1. Leading strategically
2. Approving Policy drafted by PCC's staff
3. Managing the Senior Pastor
4. Navigating crises

Campus Dimension

